

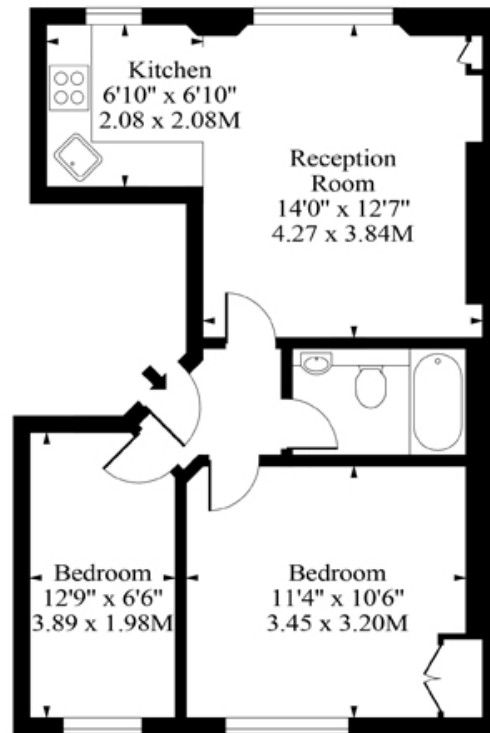


Belsize Road, London, NW6

£1,900 pcm

- Two Bedroom Apartment
- Open Plan Kitchen / Living Room
- Available 25th June 2024
- First Floor
- Close to Amenities & Transport Links
- Unfurnished

Belsize Road NW6



First Floor

Approx Gross Internal Area 526 Sq Ft - 48.87 Sq M

Measured in accordance with RICS guidelines. Every attempt is made to ensure accuracy
However all measurements are approximate.

The floor plan is illustrative purposes only and is not to scale

www.tomekphotography.co.uk

