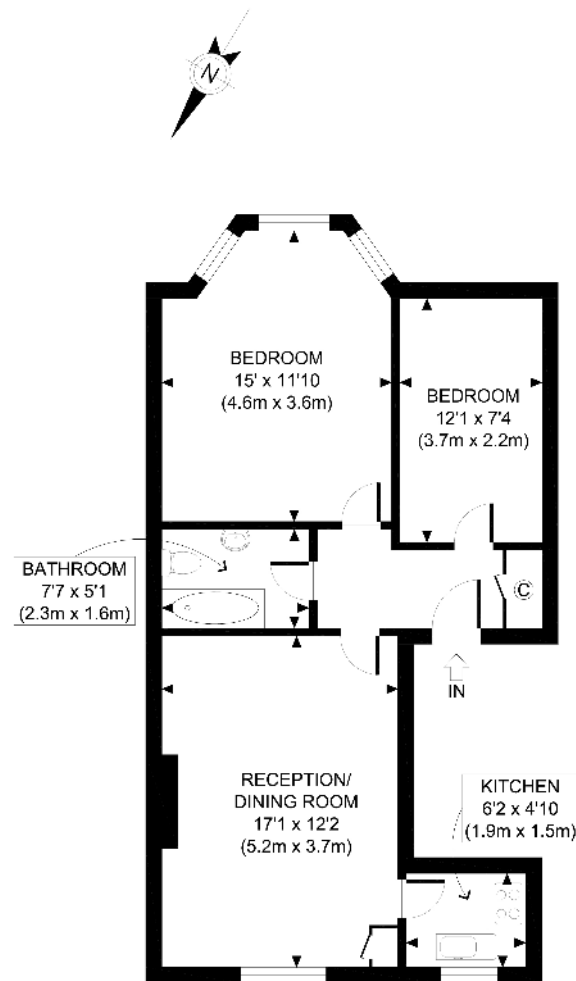




Goldhurst Terrace, London, NW6

£2,050 pcm

- Two Double Bedroom Apartment
- Large Reception
- Modern Bathroom
- Available 21st February 2024
- Period Conversion
- Fully Fitted Kitchen
- Furnished



GROSS INTERNAL
FLOOR AREA 604 SQ FT

APPROX. GROSS INTERNAL FLOOR AREA 604 SQ FT / 56 SQM

Ref: Copyright **photoplan**

Disclaimer: Floor plan measurements are approximate and are for illustrative purposes only. While we do not doubt the floor plan accuracy and completeness, you or your advisors should conduct a careful, independent investigation of the property in respect of monetary valuation

