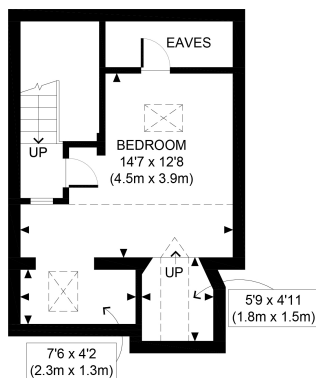




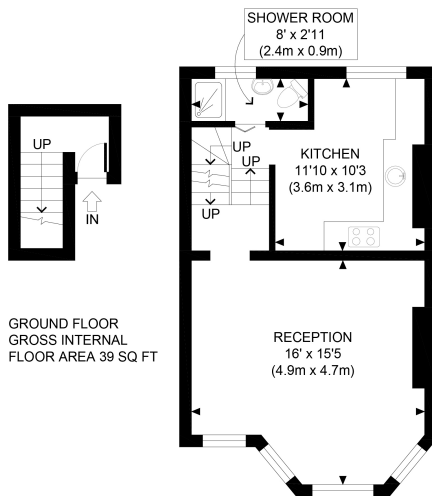
Victoria Road, London, N22

£1,600 pcm

- One Bedroom Apartment
- Period Conversion
- Part Furnished
- Split Level
- Excellent Location



SECOND FLOOR
GROSS INTERNAL
FLOOR AREA 302 SQ FT



GROUND FLOOR
GROSS INTERNAL
FLOOR AREA 39 SQ FT

FIRST FLOOR
GROSS INTERNAL
FLOOR AREA 421 SQ FT

APPROX. GROSS INTERNAL FLOOR AREA WITH EAVES 762 SQ FT / 71 SQM
APPROX. GROSS INTERNAL FLOOR AREA WITHOUT EAVES 729 SQ FT / 68 SQM
Ref: Copyright **photoplan**

Disclaimer: Floor plan measurements are approximate and are for illustrative purposes only. While we do not doubt the floor plan accuracy and completeness, you or your advisors should conduct a careful, independent investigation of the property in respect of monetary valuation

