

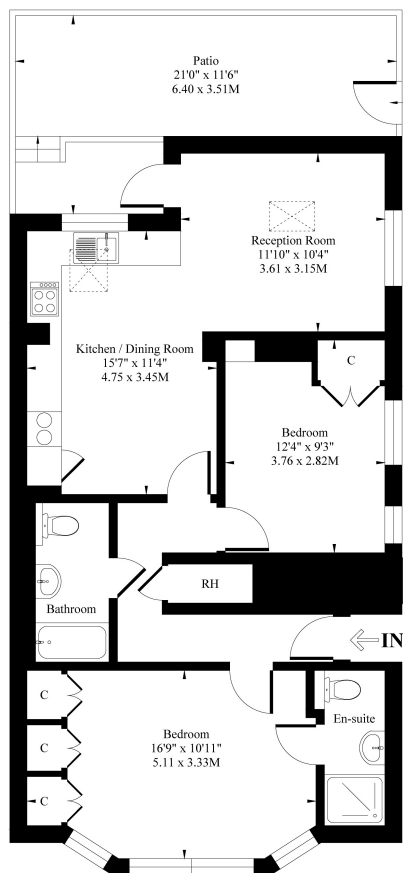


Gondar Gardens, London, NW6

£2,750 pcm

- Two Double Bedroom Apartment
- Private Courtyard
- Ample Storage
- Two Bathrooms
- Private Entrance
- Part Furnished

Godnar Gardens, NW6



Ground Floor

Approx. Gross Internal Area 754 Sq. Ft / 70.05 Sq. M

Measured in according with RICS guidelines. Every attempt is made to ensure accuracy.

However all measurements are approximate.

The floor plan is illustrative purposes only and is not to scale.

