



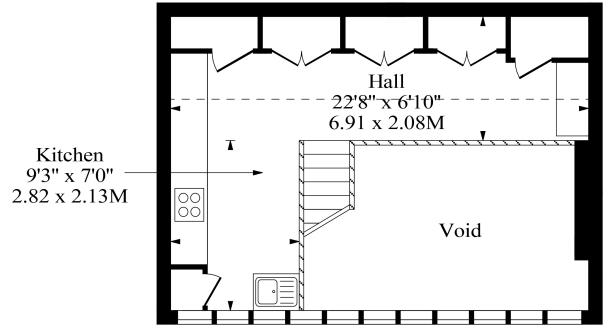
## Sherriff Road, London, NW6

£3,000 pcm

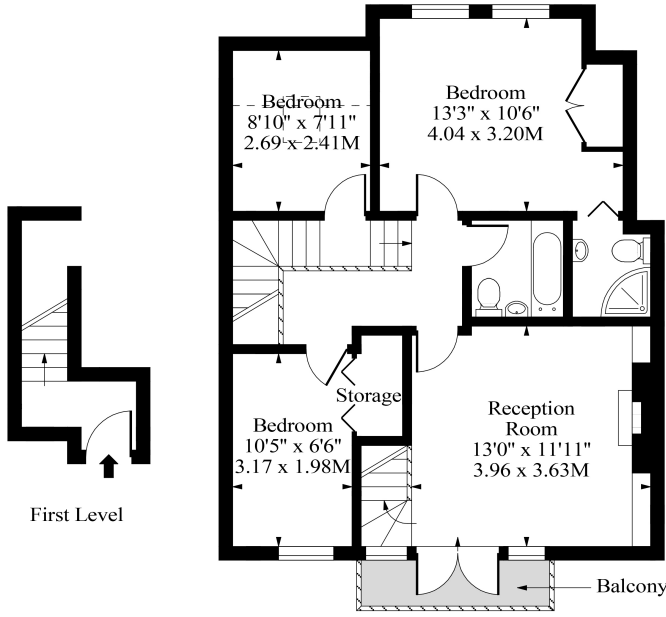
- Two Bedroom Duplex Apartment
- Juliette Balcony
- Furnished
- Two Bathrooms
- Open Plan Kitchen / Living Room



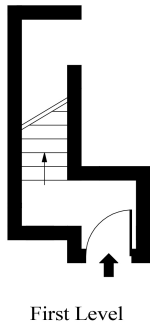
**Sherriff Road NW6**



Third Level



Second Level



First Level

Approx Gross Internal Area      1022 Sq Ft - 94.95 Sq M

Measured in accordance with RICS guidelines. Every attempt is made to ensure accuracy

However all measurements are approximate.

The floor plan is illustrative purposes only and is not to scale

www.tomekphotography.co.uk

