

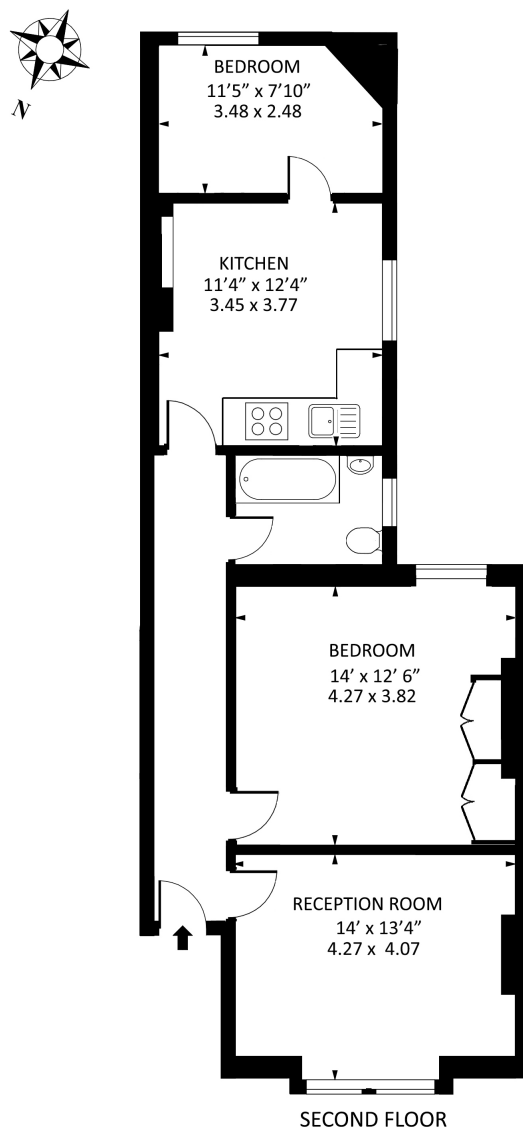


## Cavendish Mansions, Mill Lane, London, NW6

£2,000 pcm

- Two Bedroom Apartment
- Bright & Airy Throughout
- Mansion Block
- Communal Courtyard

## Cavendish Mansions NW6



Approx gross internal area : 753 sq ft - 70 sq m

Measured in accordance with RICS guidelines. Every attempt is made to ensure accuracy  
However all measurements are approximate.  
The floor plan is illustrative purposes only and is not to scale  
www.tomekphotography.co.uk

