



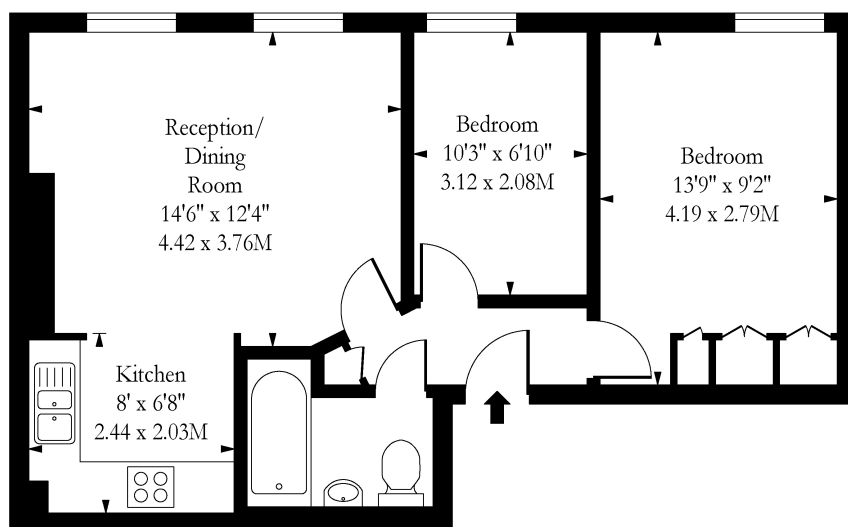
Finchley Road, London, NW3

£2,300 pcm

- Two Bedroom Apartment
- Bright & Spacious Throughout
- Close to Amenities & Transport Links
- First Floor
- Period Conversion
- Furnished



Finchley Road NW6



First Floor

Approx Gross Internal Area

503 Sq Ft - 46.73 Sq M

Measured in accordance with RICS guidelines. Every attempt is made to ensure accuracy
However all measurements are approximate.

The floor plan is illustrative purposes only and is not to scale

www.tomekphotography.co.uk

