

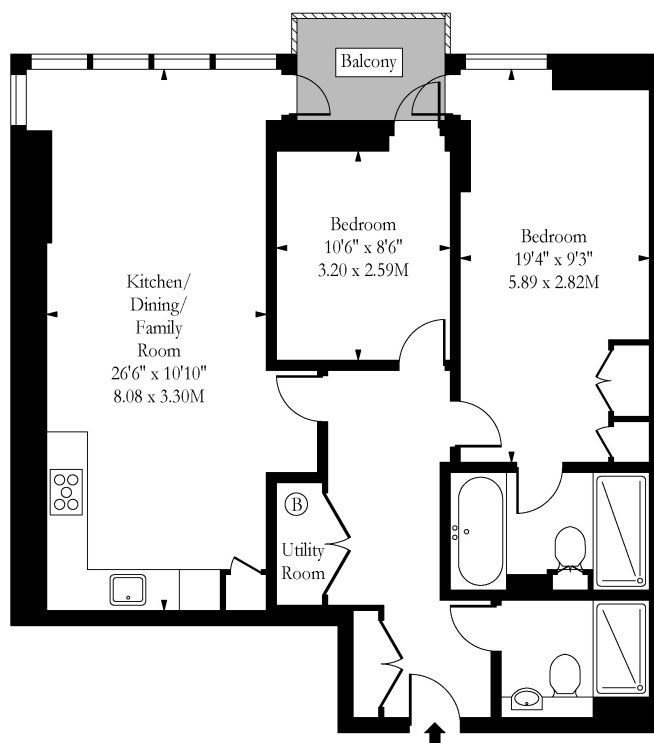
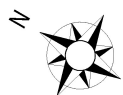


Flat 4.7, 52 Pulse Apartments, Lymington Road, London, NW6 1HQ

£2,850 pcm

- Two Bedroom Apartment
- Underground Parking
- Private Balcony
- Two Bathrooms
- Concierge In Building
- Available Now

Pulse Apartments Lymington Road NW6



Fourth Floor

Approx Gross Internal Area

817 Sq Ft - 75.90 Sq M

Measured in accordance with RICS guidelines. Every attempt is made to ensure accuracy

However all measurements are approximate.

The floor plan is illustrative purposes only and is not to scale

www.tomekphotography.co.uk

