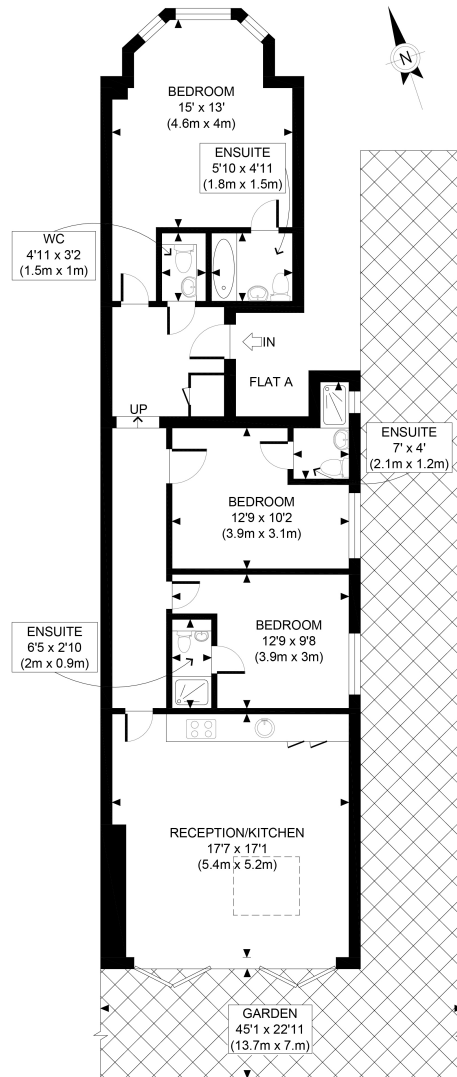




Melrose Avenue, London, NW2

£2,900 pcm

- Three Double Bedroom Apartment
- Large Private Garden
- Newly Refurbished Throughout
- Bright & Spacious Throughout
- Open Plan Kitchen / Living Room
- Close to Amenities & Transport Links of Willesden Green



GROUND FLOOR
GROSS INTERNAL
FLOOR AREA 975 SQ FT

APPROX. GROSS INTERNAL FLOOR AREA 975 SQ FT / 91 SQM

Ref: Copyright **photoplan**

Disclaimer: Floor plan measurements are approximate and are for illustrative purposes only. While we do not doubt the floor plan accuracy and completeness, you or your advisors should conduct a careful, independent investigation of the property in respect of monetary valuation

