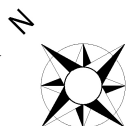




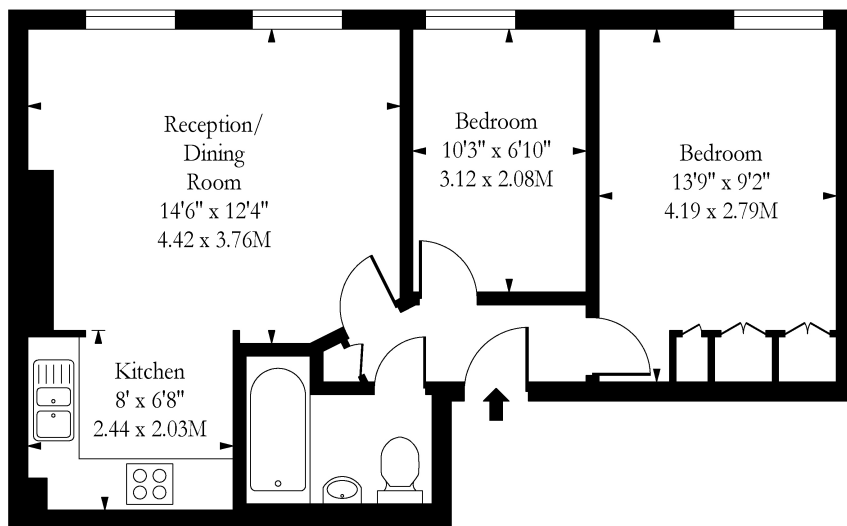
## Finchley Road, London, NW3

£2,200 pcm

- Two Bedroom Apartment
- Bright & Spacious Throughout
- Close to Amenities & Transport Links
- First Floor
- Period Conversion
- Furnished



## Finchley Road NW6



First Floor

Approx Gross Internal Area

503 Sq Ft - 46.73 Sq M

Measured in accordance with RICS guidelines. Every attempt is made to ensure accuracy  
However all measurements are approximate.

The floor plan is illustrative purposes only and is not to scale

[www.tomekphotography.co.uk](http://www.tomekphotography.co.uk)

